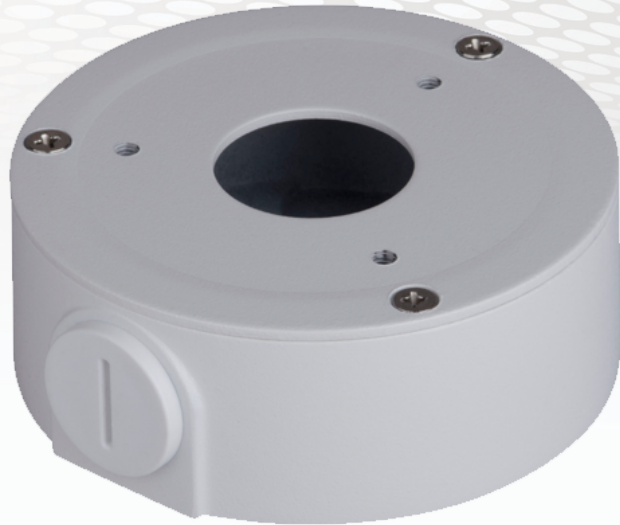


BASE-134-W

SPECIFICATIONS

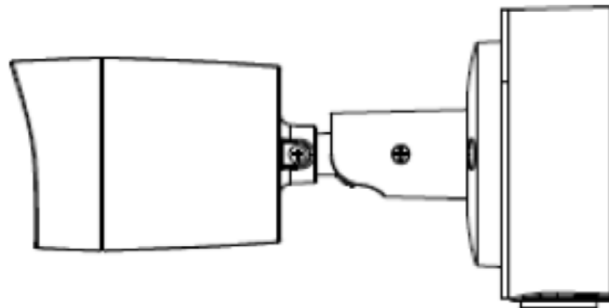
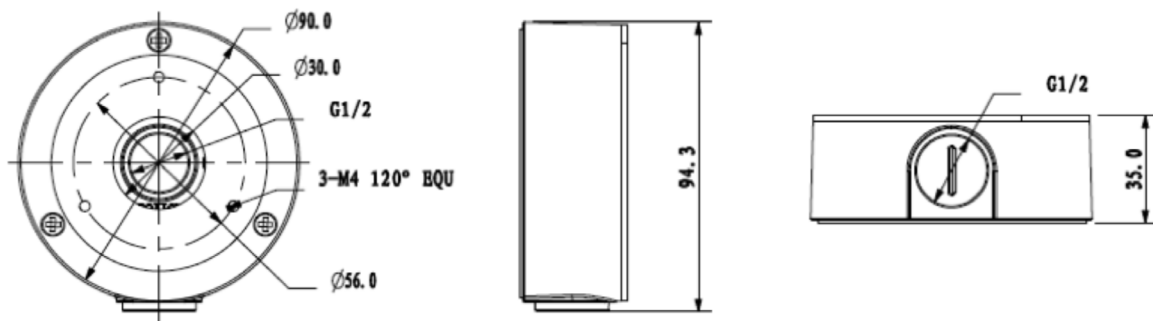
Material	Aluminium & SECC
Dimension (W x D x H)	90x35mm
Inch Thread	M20(G1/2")
Operating Temperature	-40°C -60°C
Humidity	0-90% RH
Load Bearing	1.0Kg
Weight	0.22Kg
Colour	White
Compatible With	Refer to relevant camera(s) sales documents



FEATURES

Material	Aluminium & SECC
Colour	White
Type	Junction Base
Environmental	Weatherproof

DIMENSIONS & APPLICATION



European Head Office
IC Realtime,
12 Knockmitten Lane,
Western Industrial Estate,
Dublin 12,
Ireland

UK Office
IC Realtime UK
Surrey Technology Centre,
40 Occam Road,
Guildford GU2 7YG,
United Kingdom

USA Head Office
IC Realtime, LLC,
3050 N Andrews Ave EXT,
Pompano Beach,
FL 33064,
USA

USA West Coast Office
IC Realtime West Coast,
14180 W Van Buren Street,
Suite B-105, Goodyear,
AZ 85338,
USA

Email us info@icrealtime.net or visit www.icrealtime.net