



SET UP GUIDE



v1.0

Thank You for Choosing C2Max!!

This setup guide (v1.0) was written for the C2Max Xtreme Recorder and C2Max Xtreme Camera range and was accurate at the time it was printed.

This guide was designed to get your system up and running. For complete system setup you need to be comfortable wiring cable and affixing cameras to surfaces.

However because of continuous improvements being made to our products and this manual covering multiple products there may be some variations found in the actual product.

The C2Max recorder has many features which can be programmed via its operating system, for further instructions please visit our support portal on www.c2max.com for further operating instructions.

© 2015 C2Max, reproduction in whole or in part without written permission is prohibited. All rights reserved.

Trademarks, all brand names and products are trademarks or registered trademarks of their respective owners.

Disclaimer, the information in this document is subject to change without notice.

Manufacturer shall not be liable for any damages whatsoever from misuse of this product.

All images for illustrative purposes only and may not be indicative of the actual product.

BEFORE YOU BEGIN

You will need the following in addition to the C2Max recorder and C2Max cameras

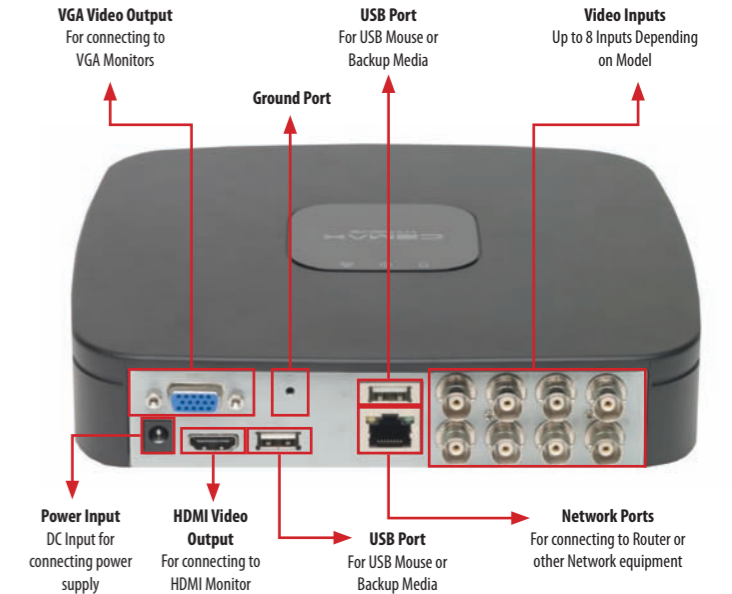
1. A HDMI or VGA Based Monitor, your C2Max recorder will be supplied with a 1m HDMI cable so this will be able to connect to most modern TVs. If using the VGA output most VGA monitors are supplied with the appropriate cable.
2. As with all electronic equipment we recommend the use of a Surge Protector (not supplied) for powering all the C2Max equipment
3. A powered screw driver / drill to mount the cameras

Unpack your C2Max Equipment

As this guide is based on a general setup that covers multiple C2Max products please check the box content(s) of the C2Max product against the contents that is listed on the carton of the product.



SYSTEM CONNECTION DIAGRAM



STEP 1 CAMERA POSITIONING

Selecting the right camera mounting location is one of the most crucial aspects when it comes to successful system design and installation. The optimal installation location will depend on your unique requirements but you should consider the following when selecting the camera location

Distance from camera to the recorder

- C2Max cameras are provided with 20m of pre-made cable, for longer runs you may need to purchase additional cable
- For cable runs over 50m it is recommended you run RG59
- Locate the power supply for the camera as close as possible to the camera as cable runs over 50m may result in possible video and IR quality issues

Environmental Conditions

- Avoid close proximity to sources of electrical interference such as high voltage power cables
- Avoid positioning where rain / snow will hit the lens directly
- Ensure the camera cabling will not be exposed or easily cut
- Ensure power and video connections are protected from the elements
- Ensure the camera is out of reach so to avoid vandalism or damage

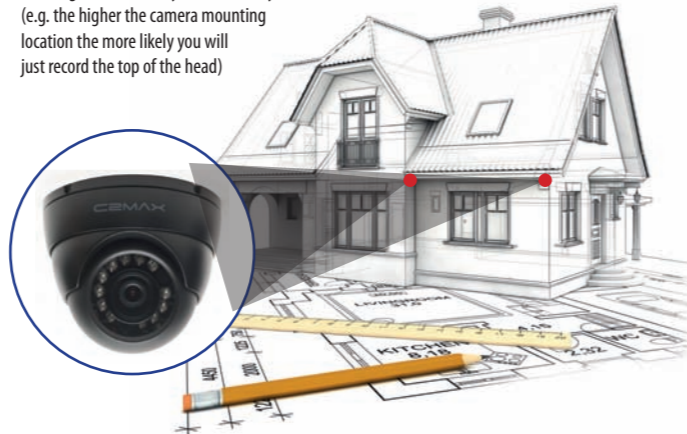
Lighting Conditions

- For optimal results do not point the camera towards direct or intense sunlight
- For effective night time IR viewing ensure the camera is located within IR viewing distance of the camera specification
- Avoid positioning where the lighting conditions of the camera location and the target area are different

The C2-HD1P-xF3x-10-x2 cameras have a 3.6mm fixed lens which offer a 90 degree viewing angle which in simple terms provides a wide viewing angle.

The higher the installation the more area the camera will capture but will result in less detail being achieved.

If you are looking to achieve facial image capture it is recommended you don't exceed ~15° angle of incidence, so for close range facial capture you may need to mount the camera at a height of 7~8ft so you can identify faces (e.g. the higher the camera mounting location the more likely you will just record the top of the head)



STEP 2 RECORDER LOCATION

Ensuring the recorder is placed in a secure and suitable location will ensure system stability and reliability. The recorder uses a Hard Disk Drive (HDD) to record the data, the HDD platter's spin during operation so it is important you follow the below guidelines when selecting the best location for the recorder.

Environmental Considerations

- Cool and dry location
- Place upright and on a level surface
- Away from direct sunlight
- Do not operate in dusty environments
- Ensure there is proper circulation around the recorder
- Do not cover the air holes located around the case, these holes are designed to keep the system cool during operation
- Do not place anything on top of the recorder
- Do not place near magnetic objects

Placement

- Secure Location so it can't be tampered with
- Ensuring camera cables can be easily wired to the recorder
- For remote viewing the system will require it to be connected to the network so placing the recorder near your router or switch is advised

STEP 3 INSTALLING CAMERAS

Before you affix the camera into position, please ensure the cable is sufficient length to reach the recorder.

Ensure the surface you want to mount the camera to is solid and can support the weight of the device

Follow the mounting, safety and installation instructions included with the camera.



When the camera is mounted into position, connect the BNC and Power Connection from the camera to the matching connectors on one end of the pre-made cable.

IMPORTANT:

- Ensure the "male" DC plug is located on the camera end side before you start cabling.
- When running the camera cable back to the recorder ensure you avoid sharp bends in the cable and that you avoid close proximity to electrical sources
- The connections on the camera and cable are not weather or water proof so we advise that these connections are located indoors or in a IP rated enclosure

STEP 4 CONNECT USB MOUSE TO C2MAX RECORDER

Connect the supplied USB Mouse to one of the USB ports located on the back of the C2Max Recorder.

The mouse is used to control the on-screen operating system when using the system locally.

The spare USB port can be used for backing up footage when required.



STEP 5 CONNECT NETWORK CABLE

This step is only necessary if you are intending on viewing the system remotely over the internet.

Connect the supplied network cable to your DSL / ADSL Router or Network Switch

If your router or switch is located away from the recorder you can purchase a longer network cable or purchase a HomePlug (aka Powerline Extender) from most good IT or Electrical based retailers or online



STEP 6 CONNECT A DISPLAY TO THE C2MAX RECORDER

Your C2Max recorder has both a VGA and HDMI video output which can be used independently or together at the same time (e.g. you can have two monitors running together from the recorder)

The C2Max recorder is supplied with a HDMI cable which can be used to connect to most modern TVs or independent HDMI based computer monitors.

Connect the HDMI cable to the HDMI port on the back of the recorder to the HDMI port found on the monitor (not supplied)



NOTE: The C2 Xtreme Recorder at default is setup with a Video Output Resolution of 1280x1024, this can be changed in the OS of the C2 Xtreme to higher resolutions.

Turn Over to Continue the Setup

STEP 7 CONNECTING POWER TO CAMERAS

C2Max Xtreme Recorder and Cameras are purchased separately but the PSU for the cameras is supplied with the recorder.

Model	12v 3AMP PSU	4 Way Power Splitter
C2 Xtreme 4 Channel	1 (Qty)	1 (Qty)
C2 Xtreme 8 Channel	2 (Qty)	2 (Qty)

These power supplies have enough power for 4 x C2Max Xtreme Cameras when using the supplied cable (20m) that comes with the C2Max Xtreme Cameras.



Connect the supplied power splitter to the end of the camera cable



Connect the power splitter cable into the camera power supply.

Important! Do not plug the power supply into the mains connection at this time!



Connect the BNC connector on the pre-made cable into ports marked with Video In on the back of the recorder

STEP 8 CONNECT POWER SUPPLY TO RECORDER

The C2Max Xtreme Recorder is supplied with a 12v DC 2 Amp PSU.

We only recommend the use of the supplied power supply with the C2Max Xtreme recorder, use of other PSUs may result in permanent malfunction of the device and may void the warranty.

Connect the Power Supply to the black power connection on the recorder.

Important! Do not plug the power supply into the mains connection at this time!



STEP 9 CONNECTION COMPLETION

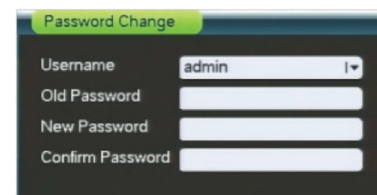
The system is now fully connected and the power supplies can be connected to the mains!



STEP 10 PASSWORD CHANGE

Your device is fully operational and available to use when you hear the beep.

When the system boots up for the 1st time you will be requested to change the default administrator password for local and online access, the system will display the following screen:



Enter the "Old Password" which is admin at default

In the New and Confirm Password boxes enter your new password.

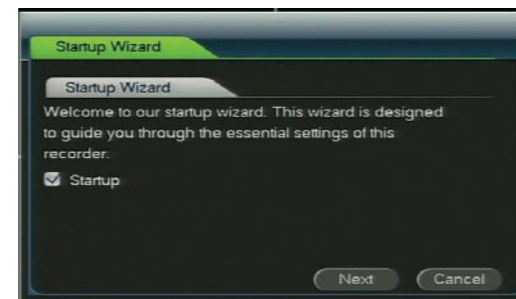
IMPORTANT!

It is highly recommended that you change all the default system passwords to ensure the security of the system. Please follow the instructions in the "Account Management" section of the full user manual for the C2Max Xtreme Recorder on the C2Max website in how to change passwords. Record any changes and keep that information stored securely.

STEP 11 START-UP WIZARD

After you have changed the default system password, a start-up wizard will launch to guide you through some essential settings.

Click next to enter the start-up wizard, the system will ask you for the password. Proceed to enter your password and enter the wizard.



The start-up wizard will guide you through General settings, Record Quality and Schedule adjustments and Network settings.

NOTE: The C2 Xtreme Recorder at default is setup with a Video Output Resolution of 1280x1024, this can be changed in the OS of the C2 Xtreme to higher resolutions.

STEP 12 REMOTE VIEWING ON SMART PHONE

When the system is setup, you can continue to setup remote viewing of the C2Max Xtreme System.

This walkthrough is based on the following pre-requisites:

- The C2Max Xtreme Recorder is connected to the router/switch that supplies the internet connection
- The C2Max Xtreme Recorder has connected to the internet and to the C2Max P2P cloud connection
- You have a Smart Phone that has an internet connection
- You can download and install one of C2Max's applications

We base this walk through on the basis that this is the 1st CCTV System you have setup to remote view and that you currently only have one C2Max Xtreme recorder.

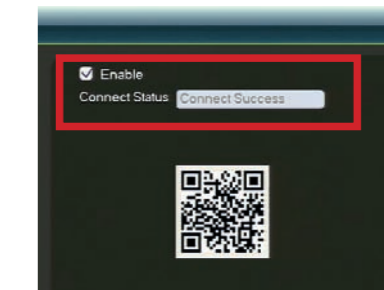
For users who have multiple C2Max devices or require a more advanced setup please consult the full user manual for the recorder and our internet viewing setup guides available from our website.

C2Max Xtreme can also be accessed through web browser or client software for PC & Mac Operating systems. Please consult the full user manual for more information.

STEP 13 CONFIRMING THE C2MAX XTREME HAS CONNECTED TO THE INTERNET

At default the C2Max Xtreme Recorder is setup to automatically find an IP address on your local network (e.g. the LAN)

- Access the main menu of the C2Max Xtreme Recorder
- Go to Setting and then Network
- When in network select "P2P Setting" from the menu selection
- At default P2P is enabled but if the feature isn't enabled tick the Enable box
- A successful P2P connection will display "Connect Success"



If the C2Max Xtreme recorder displays "Connect Success" you can progress to the next stage, if it says "Disconnected" please re-check your Ethernet cable going from the recorder to the router. If you continue to have encounter problems please contact us for further assistance.

STEP 14 SELECTING THE APPLICATION FOR YOU!

If you have got the message "Connect Success" in the last step you can now progress to setting up the smart phone application.

C2Max has a range of applications available currently for Apple iOS and Google Android. We have different applications for smart phones and tablets.

Name	Smart Phone	Tablet	Live View	Playback	Push Notifications	E-Map	Favourites	Price
C2 Xtreme	Y	-	Y	Y	-	-	-	
C2 Xtreme Pro	Y	-	Y	Y	Y	Y	Y	Paid
C2 Xtreme+	-	Y	Y	Y	-	-	-	
C2 Xtreme+ Pro	-	Y	Y	Y	Y	Y	Y	Paid

Choose the most suitable version for your requirements and search for the application via the App Store on iOS or the Play Store on Android. Please refer to the relevant app store for up to date pricing on the paid applications available.



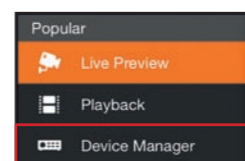
Download the application and progress to the next step

STEP 15 ADDING THE C2MAX XTREME TO THE C2 XTREME APPLICATION

1 Launch the C2 Xtreme Application on your device

2 Press the menu button located in the upper left corner of the application

3 Select Device Manager



4 In Device Manager Press the "+" in the upper right hand corner



5 Select P2P



6 Enter a descriptive name of the device you are adding (e.g. My Home)

7 Press the QR Code Symbol in the SN box

This will then request access to the device camera, click allow and continue to scan the QR code of the C2Max Xtreme recorder. The QR code can be found on the cover of the C2Max Xtreme Recorder or from the P2P Menu on the GUI

8 Confirm the Username and password and click to save and launch the cameras

ADDITIONAL ASSISTANCE

In the event that you need further assistance with C2Max products you can contact us via the following methods:

- Additional Support Material can be found on our support portal at www.c2max.com/support
- Email support is available at support@c2max.com
- If you still need further assistance you can contact our support team on the following numbers
 - UK: 0044 (0) 1483 685 460
 - Ireland: 00353 (0) 1 4268275

In the unlikely event of something going wrong the product is backed with a 12 month warranty, if you suspect something is wrong with the product contact our support centre in the 1st instance