

WEATHERPROOF **ACTIVE** HORN IP66 Loudspeakers



▶ PH20A-24

TECHNICAL SPECIFICATIONS

Rated/Max power, Watts	20
Max current drawn @ 1kHz, full power	1.2
Audio input	Line in (0dBV) balanced or unbalanced
Signal to noise ratio (EIN), dB	72
Total harmonic distortion @ full power	0.3%
Power supply, Vdc	18-30v AC or DC
Driver impedance, Ohms	8
Effective frequency range, Hz (BS6840)	250-8,000
S.P.L. @ 1 Watt, Full power / 1m, dB	104/117
Dispersion at 1,000 Hz, Degrees	110
Directivity Q factor, 1k Hz	4.90
Dimensions, front & depth, mm	Ø203 x 254
Net weight, Kgs	1.90
Colour/Finish	Cold grey RAL7035
Material	ABS plastic housing with UV protection
Mounting	Stainless Steel U Bracket & Hardware
Available with remote volume control	PH20-RVC accessory

▶ Suitable for external use

Manufacturer reserves the right to alter specifications without notice

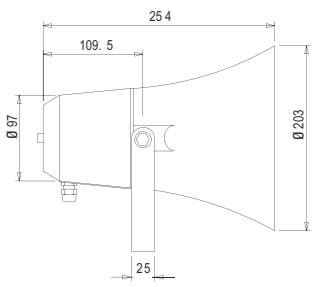
September 2016

Active

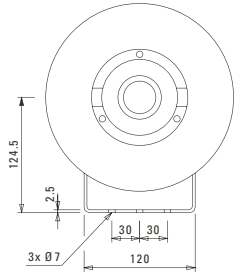
PH20A-24

WEATHERPROOF **ACTIVE** HORN IP66 LOUDSPEAKERS

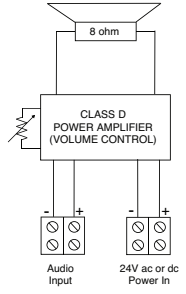
side view
unit: **mm**



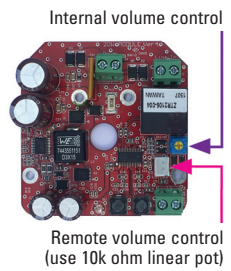
front view
unit: **mm**



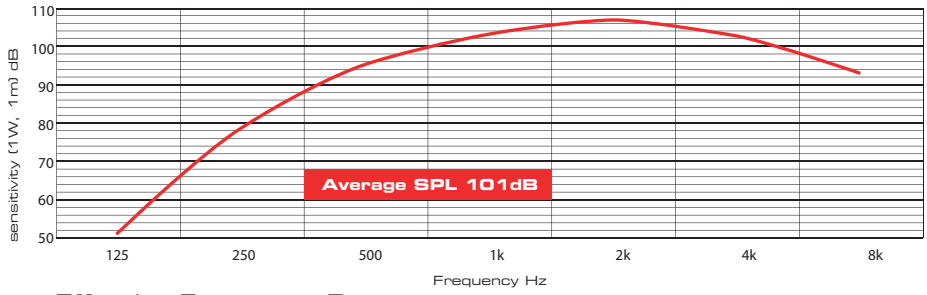
circuit diagram



amplified module



speech octave band sensitivity



Effective Frequency Range ● **PH20A-24** 250Hz - 8,000Hz



Penton UK Ltd

Unit 2 Teville Industrials | Dominion Way | Worthing | West Sussex | BN14 8NW
 T: +44 (0)1903 215315 | F: +44(0)1903 215415 | E: SALES@PENTONUK.CO.UK

www.pentonuk.co.uk