



ARCHITECTURAL BRACKETS FOR SLIMLINE MAGNETS (600LB)

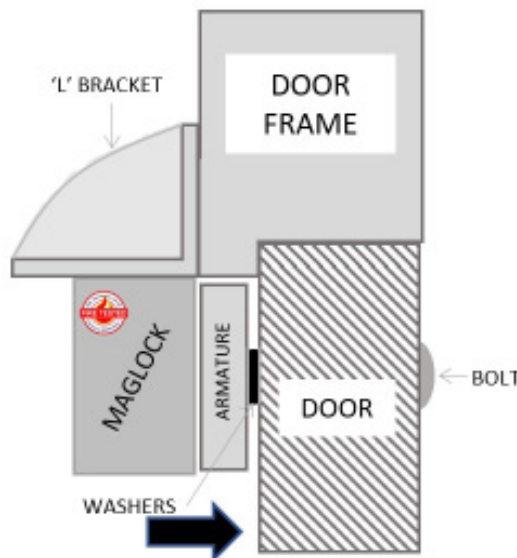
MAGNETIC LOCK

Fire tested range of maglocks and brackets from a market leader in access control.

FIRE TESTED to BSEN1634-1-2014 & BS476:Part22:1987 (30, 60, 90 & 120 min timber door-sets)



AB600CL



SPECIFICATION	FEATURES	OTHER PRODUCTS
---------------	----------	----------------

AB600CL

- Architectural L bracket
- Anodised aluminium finish
- Adjustable to suit different applications
- For use with the ML600 range of products
- Cover screws and bolts (no visible fixings)
- Covers entire length of maglock
- For outward opening doors
- Aesthetically improves the appearance of the maglock

AB600CL

- Fire rated (30, 60, 90 & 120 min timber door set)
- Provide a more aesthetically pleasing finish to any maglock installation.
- Can suit a wide range of locations from modern offices to public buildings

Other Brackets/Housings - 600 Range:

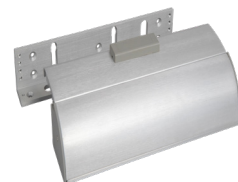
- BK600ZL (ZL bracket)
- BK600-F-L/AB (Architectural F/ZL)
- AB600ZL-DC (Architectural ZL)
- GD600ZL (Glass Door ZL)

INWARD

- BK600L (L Bracket)
- ADJ600-L (Highly adjustable L)
- AH600 (Required for Fire Doors)
- BK600U (Glass door bracket)

OUTWARD

BK600-FL/AB



AH600



ML600



DIMENSIONS

AB600CL

- L: 250x50x29 (mm) (LxWxH)
- 400g (Boxed)
- 318g (Unboxed)

CONTENTS

AB600CL

- Architectural L bracket
- Fixing kit

DU-CB/PTE



Manufactured by a BSIA Member