

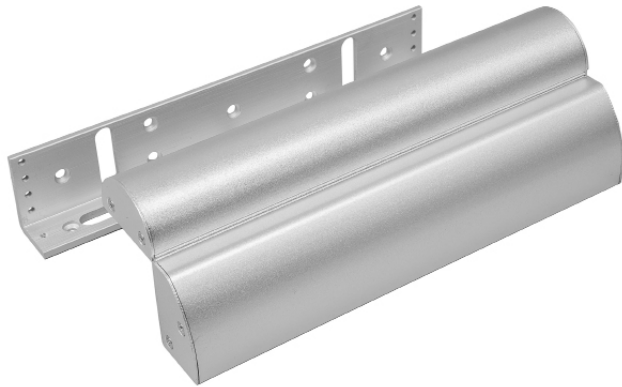


DOUBLE COVERED ARCHITECTURAL BRACKETS FOR SLIMLINE MAGNETS (600LB)

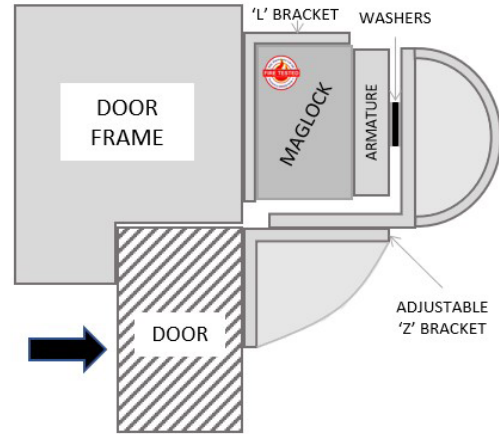
MAGNETIC LOCK

Fire tested range of maglocks and brackets from a market leader in access control.

FIRE TESTED to BSEN1634-1-2014 & BS476:Part22:1987 (30, 60, 90 & 120 min timber door-sets)



AB600ZL-DC



SPECIFICATION

- AB600ZL-DC
- Architectural Z&L brackets
 - Anodised aluminium finish
 - (Use BK600-D-FL/AB for double maglocks)
 - Adjustable to suit different applications
 - For use with the ML600 range of products
 - Cover screws and bolts (no visible fixings)
 - Covers entire length of maglock
 - For inward opening doors
 - Aesthetically improves the maglock

FEATURES

- AB600ZL-DC
- Provide a more aesthetically pleasing finish to any maglock installation.
 - Can suit a wide range of locations from modern offices to public buildings

- Other Brackets in the 600 Range:
- BK600ZL (ZL bracket)
 - BK600-F-L/AB (Architectural F/ZL)
 - BK600-D-FL/AB (Architectural Double)
 - GD600ZL (Glass Door ZL)

INWARD

OUTWARD

- BK600L (L Bracket)
- AB600CL (Architectural L)
- ADJ600-L (Highly adjustable L)
- AH600 (Required for Fire Doors)
- BK600U (Glass door bracket)

OTHER PRODUCTS

EBCBWC02/DR



EXTR02



ML600



DU-CB/PTE



DIMENSIONS

- AB600ZL-DC
- Z1: 254x50x75 (mm)
 - Z2: 254x50x31 (mm)
 - L: 250x50x29 (mm)
 - 1kg (Boxed)
 - 886g (Unboxed)

CONTENTS

- AB600ZL-DC
- 2 x Brackets to make up Z
 - 1 x L Adjustable bracket
 - 1 x Fixing kit



Manufactured by a BSIA Member