



DUAL UNIT KEY SWITCH

DUAL UNIT EDR

Dual Unit - Emergency Door Release and Key Switch



DU-KS/1

SPECIFICATION

- DU-KS/1
- High impact plastic back box
 - Latching on/off operation
 - Key removal in both positions
 - Supplied with 2 x keys (2803)
 - Voltage free contacts
 - Security screws (allen key type)
 - Contact ratings: 24V @ 5AMP
-
- Triple pole
 - Includes audible/LED (selectable)
 - 12/24V operation
 - Includes plastic front covers which flip up for operation
 - Contact ratings: 24V @ 5AMP
 - IP24 Rated

FEATURES

- DU-KS/1
- All one colour
 - Easy clean surface
 - Screw footprint for surface fitting onto standard back box
 - Saves labour time on wiring
 - Latching key switch
 - Secure control of exit door
 - Emergency release if required

ALTERNATIVES

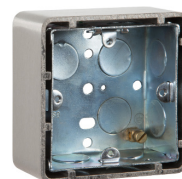
- DU-KS/2 (Momentary Key Switch)

OTHER PRODUCTS

EBCBWC02/DR



EXTR02



ML600



DU-GB/PTE



DIMENSIONS

- DU-KS/1
- 160x90x42/37 (mm) (HxWxD)
 - 380g (Boxed)
 - 300g (Unboxed)

CONTENTS

- DU-KS/1
- Emergency Door Release
 - DU-COVER
 - Security Screws
 - Allen Key
 - Mounting Plate
 - 2 Reset Key
 - 2 x Keys



Manufactured by a BSIA Member