



PUSH PLATE SWITCH (DDA)

EXIT BUTTONS

Market leading supplier of door access equipment, including an expanding range of DDA compliant push plates.



EBLPP04



EBLPP04/PTO



EBJS-01



EBJS-01/PTO

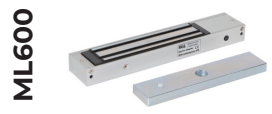
SPECIFICATION

- EBLPP04 / EBLPP04/PTO / EBJS-01
- Contacts: Double pole N/O - N/C
 - Output: 4 AMP contact @ 30V AC/DC
 - Wear resistant legend
 - Security screws (allen key type)
 - Voltage free contacts
 - Internal or External use
 - Silver contacts
 - Operating temperature -20° to +60°c
 - Operating travel: 2mm
 - Contact resistance: 10m OHM (Max)
 - Operating life (mechanical): 1,000,000

FEATURES

- EBLPP04 / EBLPP04/PTO / EBJS-01
- Large push plates for ease of access
 - Momentary operation
 - High impact plastic back box
 - Durable construction
 - Easy clean surface. Ideal for general/sensitive areas
 - Surface fitting only (for flush fitting use EBLPP02)

OTHER PRODUCTS



DIMENSIONS

- EBLPP04 / EBLPP04/PTO
- 129H x 129W x 54D (mm) (5 inches)
 - 552g (Boxed)
 - 464g (Unboxed)
- EBJS-01
- 120H x 50W x 47D (mm)

CONTENTS

- EBLPP04 / EBLPP04/PTO / EBJS-01
- Stainless Steel Push Plate
 - 2 Security Screws
 - Allen Key
 - Surface Box



Manufactured by a BSIA Member