



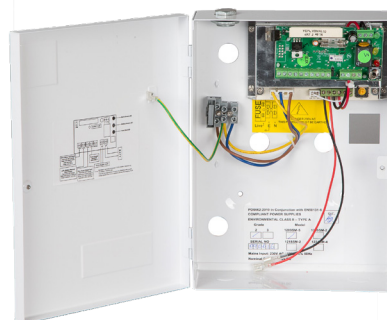
EN POWER SUPPLY RANGE

POWER SUPPLIES

Manufacturer of access control systems, including a market leading range of power supply units.



EN PSU



SPECIFICATION

- EN PSU
- Internal LED diagnostics
 - Full current to load plus additional battery charging
 - 13.8VDC regulated output
 - Deep discharge protection
 - Security front tamper (Grade 2) or front and rear tamper (Grade 3)
 - Fault outputs:
 - EPS fault (mains fail)
 - APS fault (battery fail)
 - PO fault (output fail)
 - Can recharge a 9Ah battery (min 10v) from flat to 80% in 24 hours (1209)
 - Can recharge a 18Ah battery (min 10v) from flat to 80% in 24 hours (1218)
 - Monitors battery health

DIMENSIONS

- EN2-1209SM-5: • 265x197x72 (mm) • 1.49kg (Boxed)
 EN2-1209SM-2: • 340x310x80 (mm) • 3.07kg (Boxed)
 EN2-1218SM-2: • 340x310x80 (mm) • 3.07kg (Boxed)
 EN3-1209SM-5: • 265x197x72 (mm) • 1.49kg (Boxed)
 EN3-1209SM-2: • 340x310x80 (mm) • 3.07kg (Boxed)
 EN3-1218SM-2: • 340x310x80 (mm) • 3.07kg (Boxed)

FEATURES

- EN PSU
- Mild steel construction
 - White powder coated finish
 - Hinged style box
 - Wiring instructions inside product
 - More efficient and environmentally friendly
 - Multiple cable entry points
 - Front tamper (EN2 & EN3)
 - Rear tamper (EN3 only)
 - Switchmode technology

CONTENTS

EN PSU

OTHER PRODUCTS

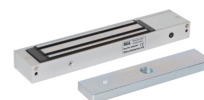
EBCBWC02/DR



KPX1000



ML600



DU-CB/PTE



Manufactured by a BSIA Member