



# FIREMANS SWITCH



**FMS-SURF**



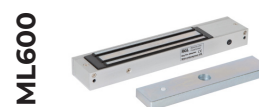
**SPECIFICATION**

- FMS
- NO/COM/NC
- Changeover contacts
- Tamper proof fixings
- Stainless steel

**FEATURES**

- FMS
- Flush or surface mount options
- Drop key units
- Key not included with units
- Allows firefighters to quickly disconnect power in an emergency

**OTHER PRODUCTS**



**DIMENSIONS**

- FMS-FLUSH - 127x157x76 (mm) - 676g (Unboxed)
- FMS-SURF - 125x155x76 (mm) - 908g (Unboxed)

**CONTENTS**

- FMS-SURF
- FMS-FLUSH
- FMS-KEY



Manufactured by a BSIA Member