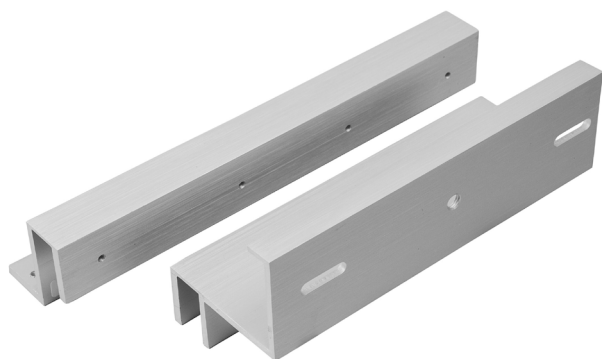




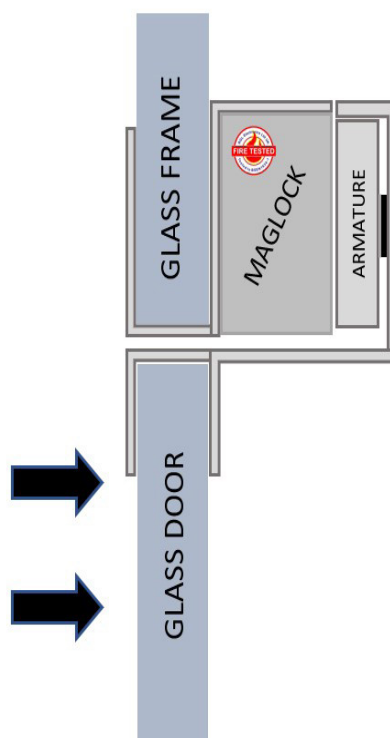
# ZL BRACKETS FOR GLASS DOORS (600LB)

**MAGNETIC LOCK**

Range of brackets suitable providing solutions for a variety of glass door requirements. From a market leader in access control.



**GD600ZL**



| SPECIFICATION | FEATURES | OTHER PRODUCTS |
|---------------|----------|----------------|
|---------------|----------|----------------|

GD600ZL  
 • 2 x GD600ZL brackets required for double maglocks

Suitable for RGL Slimline Maglocks - inc:  
 ML600 / ML600-M / ML600-MDS / ML600-D / ML600-D-M / ML600-D-MDS

Z & L Brackets for an inward opening glass door, which also has a glass header. Comes complete with spacers and grub screws to ensure a secure fitting.

GD600ZL  
 • ZL bracket for use on inward opening glass doors  
 • Anodised aluminium finish  
 • Suitable for 10-14mm thick glass  
 • Gap between door and header must be at least 6mm

Alternative Brackets/Housings:

|                                     |         |
|-------------------------------------|---------|
| • BK600-F-L/AB (Architectural F/ZL) | INWARD  |
| • AB600ZL-DC (Architectural ZL)     |         |
| • GD600ZL (Glass Door ZL)           |         |
| • AB600CL (Architectural L)         | OUTWARD |
| • ADJ600-L (Highly adjustable L)    |         |
| • AH600 (Required for Fire Doors)   |         |
| • BK600U (Glass door bracket)       |         |



| DIMENSIONS | CONTENTS |
|------------|----------|
|------------|----------|

GD600ZL  
 • 250 (mm) L Bracket (L)  
 • 190 (mm) Z Bracket (L)  
 836g Boxed

GD600ZL  
 • 1 x ZL Brackets  
 • 1 x Fixing kits

