



LOCKABLE KEYPAD BOX

RGL has a broad range of accessories that complement our access control range.



KP-LOCKBOX

SPECIFICATION

KP-LOCKBOX

- Internal plate that is pre-drilled to suit a number of control panel keypads
- Lockable lid
- 2 keys supplied
- Keys removable in both positions

FEATURES

KP-LOCKBOX

- White powder coated steel enclosure
- Restricts access to keypads
- Hinged lid
- Can be mouned to suit left or right handed applications
- Spare keys available

OTHER PRODUCTS

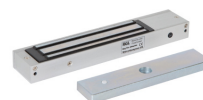
EBGBWC02/DR



EXTR02



ML600



DIMENSIONS

KP-LOCKBOX

- 205x190x55 (mm)
- 1.2kg (Boxed)
- 1.1kg (Unboxed)

CONTENTS

KP-LOCKBOX

2 x Keys



Manufactured by a BSIA Member

DU-GB/PTE

