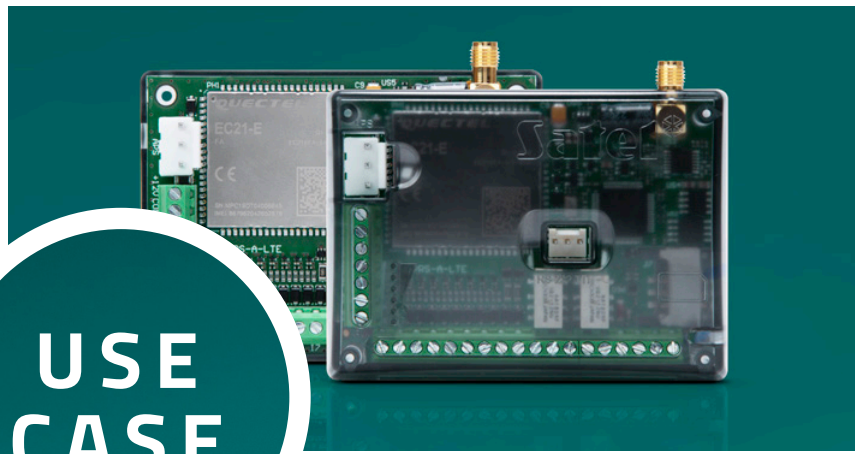


GPRS-A LTE



**USE
CASE**



**SATEL
HOLIDAY HOMES SECURED 24/7**



The Challenge

Many people these days own or maintain **one or more holiday homes**, often in secluded locations far from the city. Out of season, the owners or managers of these properties usually have **limited information on their condition** and **have to periodically visit them** to ensure there are no water leaks, break-ins, frozen pipes or other damage. Additionally, during the season, when either the owner or their guests are planning to visit, they must prepare it by switching on the water heater, airing the property, checking the central heating works and at isolated properties also check the water levels in the septic tank. This is all **time consuming** and difficult without being at the property in person and the challenges are multiplied if you are **managing more than one property simultaneously**.

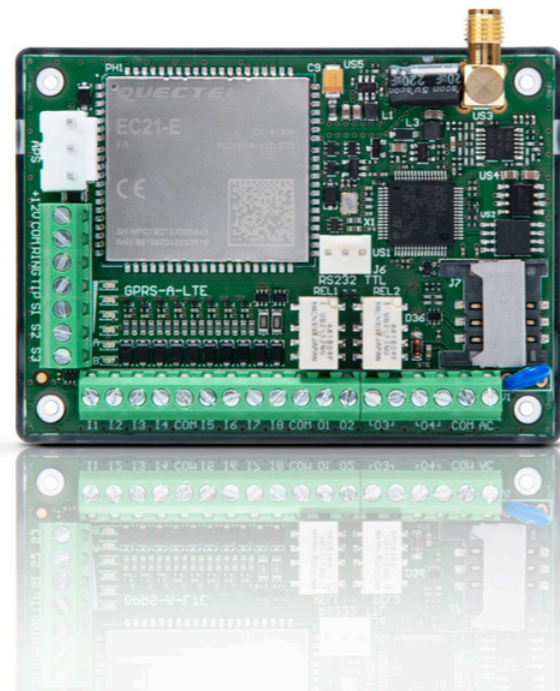
The Solution

GPRS-A LTE is an easy to install, cost-effective cellular communicator with PUSH notifications and the ability to automatically or manually control multiple services.

Up to eight 1-Wire digital **temperature sensors** can be connected to it as well as up to eight standard NO/NC/analogue inputs giving homeowners and managers the potential to receive readings from **float sensors** (e.g. in **septic tanks**), **flood detectors** (next to water tanks, sinks or washing mashines) and much more.

Current intruder alarm systems can also be connected to GPRS-A LTE. The inputs can be used to monitor alarm outputs to allow the system to be armed/disarmed remotely as well as to let the user receive **PUSH notifications** in case of break-ins or other monitored events.

Flooding, intrusion and even when it is time for the septic tank to be emptied can then be reported to the homeowners or managers via the **free mobile app**, SMS or using one of several other communication paths. Giving them **instant feedback** to respond to and **prevent or reduce damage** to the property.



Remote control

Four programmable **outputs** on the communicator can also be **remotely controlled using SMS, CLIP, the GXCONTROL app** or the GXSoft desktop application.

GX CONTROL mobile app



Programmable outputs

Two of the outputs are relays, whereas the other two are open-collector (OC) outputs. These outputs allow homeowners to automatically or manually **control services such as hot water** so that before their guests arrive they can switch on the water heater. Using an output, an **electric window winder** installed on a skylight can **also be controlled** to air properties before you or your guests arrive. Combined with temperature sensing, it is then possible to provide the best comfort for everyone before arrival.



The same solution for one or more properties!

For those with several properties to monitor and control, GPRS-A LTE also supports IoT protocols including **MQTT, JSON and MODBUS**. Combined with a free browser-based editor, owners and managers can implement one of these protocols to **monitor and control** not only one, but **multiple properties via a visual web-based dashboard**. Such solutions allow managers to monitor all properties simultaneously and react quickly to problems.



How do IoT protocols work?

IoT protocols transport messages between devices via TCP/IP and are designed for systems where devices are in isolated locations and a **lightweight data transfer is the best solution due to limited network bandwidth**.

The Results

Using GPRS-A LTE homeowners and property managers now have **real-time notifications and monitoring** to keep their properties safe and undamaged regardless of location. Additionally, **utilities** such as water heaters can **now be controlled remotely** to increase the comfort of owners and their guests more productively and efficiently.

The Benefits

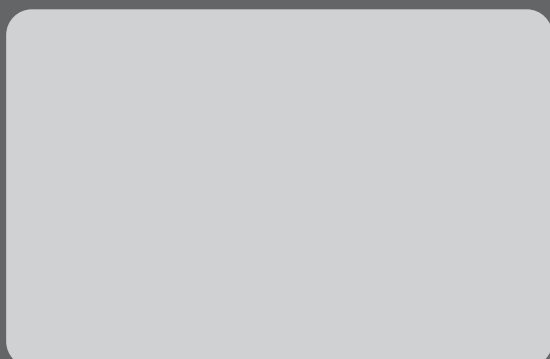
SATEL GPRS-A LTE is a high-performance, cost-effective universal monitoring module which provides notifications and control via the mobile network to phones, PCs and other interfaces.

- ✓ Simple and fast setup.
- ✓ Minimal administration required – once online.
- ✓ Quick notifications if there is a problem with a property.
- ✓ Very low energy consumption.
- ✓ Many methods and interfaces to maintain properties.
- ✓ Low one-off deployment costs.
- ✓ Free mobile app, desktop application and IoT support.
- ✓ Increased security and improved comfort of both homeowners and guests.



ul. Budowlanych 66, 80-298 Gdansk, Poland
tel. +48 58 320 94 00; fax + 48 58 320 94 01
e-mail: trade@satel.pl

www.satel.eu



The manufacturer reserves the right to change the specification and technical data of devices.
Images shown are for general information only and may differ from actual products.
U-GPRSALTE-UC-HH-EN1120

30 YEARS OF EXPERIENCE

Professional protection of each type of premises, as well as people staying therein, through advanced, yet functional and cost-effective solutions – these few words may serve as the shortest description of the mission of SATEL, a manufacturer of security systems with involvement of 100% Polish capital. Due to integrity in business and a special emphasis on high quality and a wide range of products offered, the SATEL brand has been highly appreciated in the industry for 30 years.

This philosophy of management and hard work of more than 350 SATEL's employees produce tangible results. The wide range of over 400 offered products provides countless opportunities to create security, home automation, fire alarm, access control and monitoring systems, tailored to the individual needs of each user. At the same time, these systems meet all requirements prescribed by Polish and international regulations and industry standards.

Bringing the functionality of devices into line with current requirements and expectations of the market with the use of the latest technologies is one of the main objectives of SATEL. For this reason the design and production departments of the Company are continuously being modernized and expanded. A natural consequence of all actions aimed at the production of top-quality devices was the introduction of the quality management system conforming to ISO 9001 in 2002. Regardless of this certification, SATEL also carries out a full functional test of all products leaving the production line, thus ensuring reliability of the manufactured devices. Focusing on modern design and attaching importance to the highest levels of quality and functionality of its products, SATEL has gained many satisfied customers not only in Poland but also in more than 50 markets worldwide.