

Installation Guide

Thread pole cable & socket through centre of PTZ flange and Ø148 tube

It is necessary for the cable to protrude through clamping flange approx 100mm

Thread camera plug through 1 1/2" socket & neoprene gasket

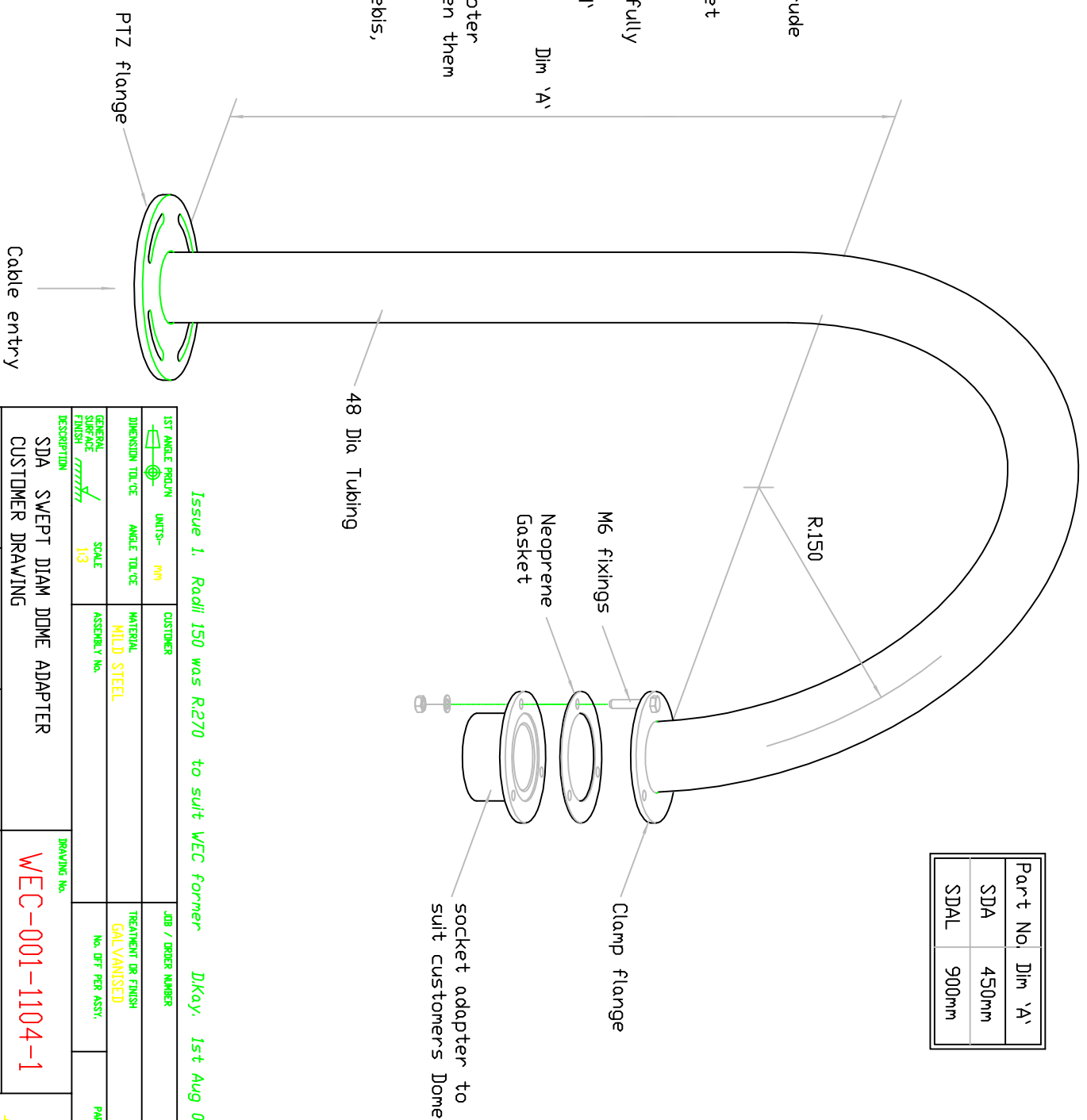
Offer socket to dome camera and carefully screw-in socket fully.

Ensure threads do not become 'crossed'

Make plug/socket connection and feed Dim 'A' up into bore of Ø148 tube.

Loosely assemble camera C/W socket adapter to clamp flange, trapping gasket between them to form a watertight joint.

Ensure gasket is flat and free from debris, Tighten evenly using M6 fastenings.



Part No.	Dim 'A'
SDA	450mm
SDAL	900mm

Issue 1. RadII 150 was R270 to suit WEC former DKay. 1st Aug 07

1ST ANGLE PROJ	UNITS -	CUSTOMER	JOB / ORDER NUMBER
	mm		
DIMENSION TOL.CE	ANGLE TOL.CE	MATERIAL	TREATMENT OR FINISH
		MILD STEEL	GALVANISED
GENERAL SURFACE FINISH	SCALE	ASSEMBLY No.	No. DTF PER ASSY
777777	1:3		
DESCRIPTION	DRAWING No.		PART No.

SDA SWEPT DIAM DOME ADAPTER
CUSTOMER DRAWING

WEC-001-1104-1

A3

DRAWN *DJ Kay* CHECKED DATE 1-Aug-20 SUPERVISERS